

When should I call my Medical Home?

If you have a minor illness such as a sore throat, a bad cough, a stomachache or rash, call your *Medical Home*.

When should I go to the ER?

If you or your child has an emergency, such as choking, poisoning, a seizure, loss of consciousness, sudden severe pain or severe chest pain, call 911 or go to the nearest ER right away.

How can I find a Medical Home?

If you are uninsured and have just been in the ER or discharged from a hospital and referred to *Sarasota Healthcare Access*, a case manager can help you find a *Medical Home*.

To enroll in a *Medical Home* before you get sick, take these simple steps:

- look at the list of *Medical Home* providers on the back of this brochure
- find the *Medical Home* site nearest you
- come in and verify eligibility for health care
- bring the paperwork the staff tells you to bring
- bring your prescribed and OTC medications and your new prescriptions

Call

941-861-2884
(North Sarasota County)

941-861-3321
(South Sarasota County)



No Health Insurance?

find
your



www.sarasotahealth.org
www.scgov.net



■ immunizations are easy to get

■ patients find it easier to get prescriptions renewed

■ patients don't have to go to the ER when they are sick--and wait for hours. *Medical Homes* take appointments

■ conditions like diabetes or high blood pressure are regulated for better health and fewer hospitalizations

■ children with asthma, ear infections and other chronic conditions feel better and miss less school

Benefits of a Medical Home

A 2007 Kaiser Family Foundation study found that 20.7% of Florida's population under age 65 did not have health insurance. Uninsured statistics for 2008-09 are expected to be higher.

Florida's Uninsured

The goal is to prevent medical problems or to treat them before they become serious. Regular visits to your *Medical Home* will help you stay healthy and out of the ER or hospital.

■ you will be referred to a specialist, if needed

■ your medical home can provide most healthcare and monitor conditions such as high blood pressure, asthma, diabetes or cardiac problems

■ Medicaid and Medicaid/Medicare HMOs insurance plans are accepted

■ fees are set on a sliding scale based on your ability to pay

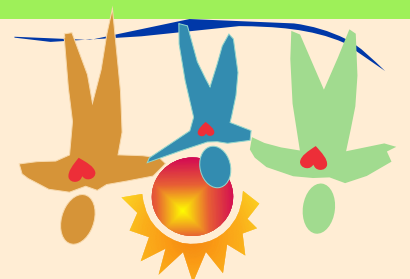
■ you will be seen by a board-certified doctor

■ you will receive ongoing medical and dental care

What is a Medical Home?

If you have recently visited the ER or have been hospitalized and don't have health insurance--please call *Sarasota Healthcare Access* for assistance (941-861-2884 or 861-3321 in south County). When you call, a case manager will help you find a *Medical Home* you can afford.

What if I can't afford medical care or my medication?



People who go to the ER are in distress and may feel they have nowhere else to go. However, ER and hospital services are expensive and time-consuming. In addition, ERs are not equipped to help you prevent medical problems or treat them before they become serious. Following through with your discharge instructions will start you on the path to staying healthy and will reduce your costs for medical care.

Why should I follow through?

Sarasota Healthcare Access is a program designed to help people find and afford the medical care they need. In particular, it helps those who have been to the emergency room (ER) or have just been discharged from a hospital. If you have just been discharged, your instructions probably are to follow-up with a *Medical Home* (primary care provider) for ongoing healthcare and medication. If you do not have health insurance, you may be tempted to ignore this advice. **Don't!**

Area Medical Homes

AREA	MEDICAL HOME	SERVICES	HOURS	FINANCIAL
North Sarasota County	<u>Sarasota County Health Department</u> Main Office 2200 Ringling Blvd. Sarasota, FL 34237 (941) 861-2900	<ul style="list-style-type: none"> Adult primary care Immunizations (adults & children) Dental center (on site) Immigration & refugee services Laboratory (on site) Pharmacy (on site) Obstetrics/gynecology Family planning/contraceptives STD evaluation & treatment 	Monday - Wednesday 8:00 am to 5:00 pm Thursday 10:00 am to 7:00 pm Friday 9:00 am to 1:00 pm	Open to Sarasota County residents Costs & Eligibility <ul style="list-style-type: none"> Eligibility for services is based on your household size and income. Cost of services is determined by your income & a sliding scale fee Insurance Accepted <ul style="list-style-type: none"> Medicaid Medicaid HMOs Medipass Medicare
	<u>Children's Health Center</u> 1750 17th St., Bldng. E Sarasota, FL 34234 (941) 861-1400	<ul style="list-style-type: none"> Pediatric medical care for children from birth through age 18 	Monday - Thursday 8:00 am to 5:00 pm Friday 9:00 am to 1:00 pm	Sarasota County residents Costs & Eligibility <ul style="list-style-type: none"> Eligibility for services is based on your household size and income. Cost of services is determined by your income & a sliding scale fee Insurance Accepted <ul style="list-style-type: none"> Medicaid Medicaid HMOs Medipass Medicare Florida Kidcare
	<u>Senior Friendship Centers, Inc.</u> 1888 Brother Geenen Way Sarasota, FL 34236 (941) 556-3220	<ul style="list-style-type: none"> Patients 50-65 years of age Adult primary care Limited laboratory services Dental care 	Monday - Friday 8:00 am to 4:00 pm	Fees are on a sliding scale based on ability to pay
South Sarasota County	<u>South County Family Health Center</u> 7820 Tamiami Tr. S. Bldng. B2 Venice, FL 34293 (941) 861-3301	<ul style="list-style-type: none"> Adult primary care Pediatric primary care Immunizations (adults & children) Dental center (on site) Immigration & refugee services Laboratory (on site) Pharmacy (on site) Obstetrics/gynecology Family planning/contraceptives STD evaluation & treatment 	Monday & Thursday 8:00 am to 5:00 pm Wednesday 9:00 am to 5:00 pm Tuesday 9:00 am to 6:00 pm Friday 8:00 am to 1:00 pm	Sarasota County residents Costs & Eligibility <ul style="list-style-type: none"> Eligibility for services is based on your household size and income. Cost of services is determined by your income & a sliding scale fee Insurance Accepted <ul style="list-style-type: none"> Medicaid Medicaid HMOs Medipass Medicare Florida Kidcare
	<u>North Port Health Center</u> 6950 Outreach Way North Port, FL 34287 (941) 548-0100	<ul style="list-style-type: none"> Adult primary care Pediatric primary care Immunizations (adults & children) Dental center (on site) Laboratory (on site) Pharmacy (on site) Obstetrics/gynecology Family planning/contraceptives STD evaluation & treatment 	Monday 8:00 am to 6:00 pm Tues. - Thurs. 7:00 am to 6:00 pm Friday 9:00 am to 1:00 pm	Open to any eligible person Costs & Eligibility <ul style="list-style-type: none"> Eligibility for services is based on your household size and income. Cost of services is determined by your income & a sliding scale fee Insurance Accepted <ul style="list-style-type: none"> Medicaid Medicaid HMOs Medipass Medicare Florida Kidcare
	<u>Senior Friendship Centers, Inc.</u> 2340 Scenic Dr. Venice, FL 34293 (941) 548-0041	<ul style="list-style-type: none"> Patients 50-65 years of age Adult primary care Limited laboratory services Dental care 	Monday & Friday 8:00 am to 4:00 pm	Fees are on a sliding scale based on ability to pay